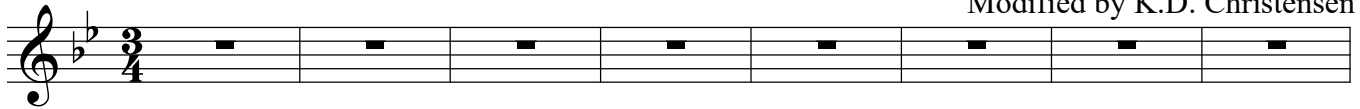


Alto

# Come, Thou Fount of Every Blessing

Text by Robert Robinson  
Melody from John Wyeth's  
"Repository of Sacred Music" Part Second  
Arranged by Sally DeFord  
Modified by K.D. Christensen

With Emotion ♩ = 70



9 *mp*

Come thou fount of ev-ry' bles-sing. Tune my heart to sing thy grace; Streams of mer-cy, ne-ver

15

ceas-ing call for songs of loud-est praise. Teach me some mel-o-dious son-net, sung by flam-ing tongues a-

21

bove. Praise the mount! I'm fixed up-on it, mount of thy re-deem-ing love.

28 *mf*

Here I raise my Eb-en-e-zer; Here by thy great help I've come; And I

34

hope, by thy good plea-sure, safe-ly to ar-rive at home. Je-sus sought me when a stran-ger, Wan-d'ring

40

from the fold of God; He, to res-cue me from dan-ger, in-ter-posed His pre-cious blood.

47 *mp*

Oh, to grace how great a

## Come, Thou Fount of Every Blessing

55

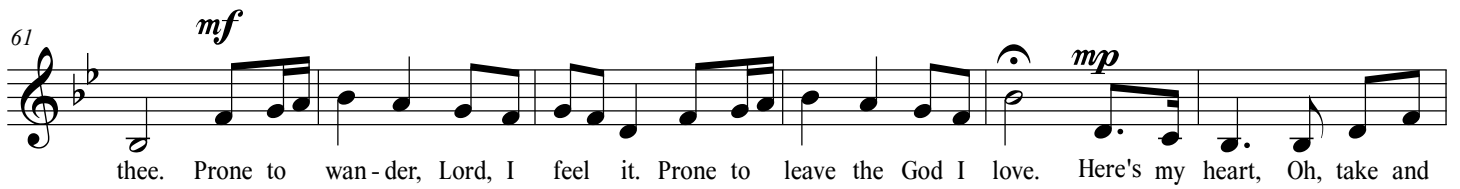


debt - or dai - ly I'm con - strained to be! Let thy good - ness, like a fet - ter, bind my wan - dr'ing heart to

Detailed description: This block contains the first line of musical notation, measures 55 through 60. It is written in a treble clef with a key signature of one flat (B-flat). The melody consists of eighth and quarter notes. The lyrics are: "debt - or dai - ly I'm con - strained to be! Let thy good - ness, like a fet - ter, bind my wan - dr'ing heart to".

61

*mf*

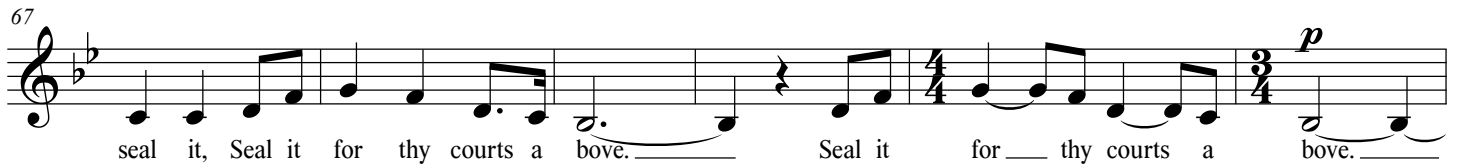


thee. Prone to wan - der, Lord, I feel it. Prone to leave the God I love. Here's my heart, Oh, take and

*mp*

Detailed description: This block contains the second line of musical notation, measures 61 through 66. It continues in the same key signature. Dynamic markings include *mf* (measures 61-65) and *mp* (measures 66-68). The lyrics are: "thee. Prone to wan - der, Lord, I feel it. Prone to leave the God I love. Here's my heart, Oh, take and".

67

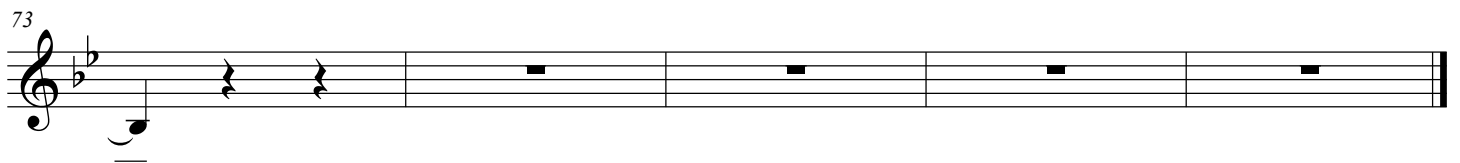


seal it, Seal it for thy courts a bove. Seal it for thy courts a bove.

*p*

Detailed description: This block contains the third line of musical notation, measures 67 through 72. It features a change in time signature from 4/4 to 3/4 in measure 72. Dynamic marking is *p*. The lyrics are: "seal it, Seal it for thy courts a bove. Seal it for thy courts a bove.".

73



Detailed description: This block contains the fourth line of musical notation, measures 73 through 78. It continues in the 3/4 time signature. The lyrics are not present for these measures, only the musical notation is shown.